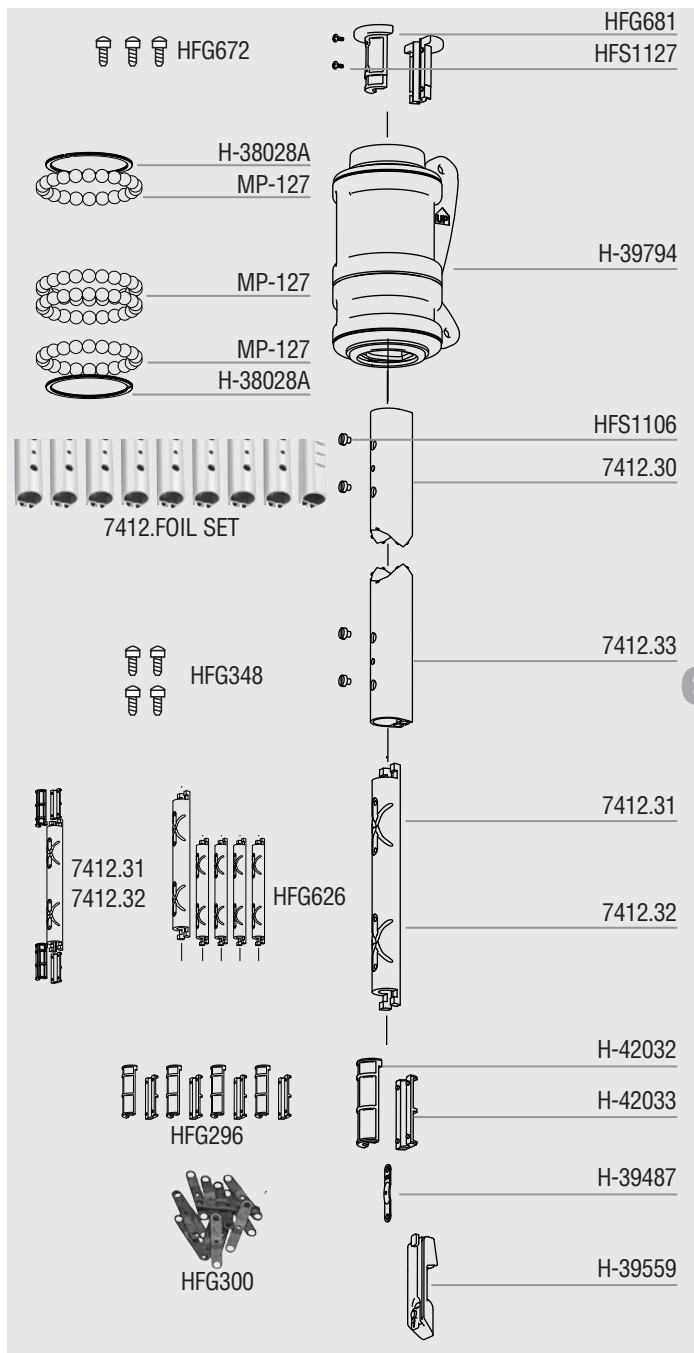


	Description	Order	Part No.
1	Top Cover Assembly w/Screws	1	HFG686
	Top Cover	2	H-35665D
	Top Cover Screw (M4 x .7 x 10MM)	2	HFS980
	Bottom Flange Assembly w/Screws	1	HFG687
	Flange	2	H-35600C
	Bottom Flange Screw (M4 x .7 x 10MM)	2	HFS980
2	Guard Assembly	1	HFG688
	Guard Set	2	H-35199E
	Guard Screw (M6 x 1 x 40MM SHCS)	2	HFS1052

No.	Description	Order	Part No.
3	Torque Tube Assembly	1	HFG928
	1 Clamp	1	H-42346
	1 Clamp Screw (M6 x 1 x 16MM SHCS)	4	HFS747
	Hub Assembly	1	HFG924
	1 Cotter Pin (5/32" x 1.250")	4	HFS203
	2 Clevis Pin (5/8" x 1.460")	4	H-42397
	3 Bearing Cap w/Insert	2	HFG933
	A Bearing Cap	1	H-43231
	B IGUS® Bushing	1	HCP1707
4	4 Socket Head Cap Screws (M6 x 1 x 12MM)	4	HFS876
	Ball Plug	5	H-33860A
	Torlon® Ball Bearing (3/8")	28	MP-127
	Delrin® Ball Bearing (3/8")	134	MP-123
5	Deck Flange	1	H-43100



6

Description	Order	Part No.
Trim Cap Set w/o Screws	1	HFG681
Trim Cap Screw Set	1	HFG672
Trim Cap Screw	3	HFS1127
Halyard Swivel w/o Shackles	1	H-39794
Torlon® Ball Bearings	92	MP-127
Clip/Smalley Ring	2	H-38028A
Foil Set	1	7412.FOIL SET
Foil (7' / 2.13 m) Luff	8	7412.30
Foil (2' / 610 mm) Bottom	1	7412.33
Foil Screw Set	1	HFG348
Foil Screw	38	HFS1106
Connector Set w/o Bushings	1	HFG626
Connector (9" / 229 mm)	7	—
Connector Bottom (13" / 330 mm)	1	—
Connector Bushing Set	1	HFG296
Connector Bushing (Curved / Longer)	16	H-42032
Connector Bushing (Flat / Shorter)	16	H-42033
Connector w/Bushings	1	7412.31
Connector (9" / 229 mm)	1	—
Connector Bushing (Curved / Longer)	2	—
Connector Bushing (Flat / Shorter)	2	—
Connector w/Bushings Bottom	1	7412.32
Connector Bottom (13" / 330 mm)	1	—
Connector Bushing (Curved / Longer)	2	—
Connector Bushing (Flat / Shorter)	2	—
Connector Wedge Set	1	HFG300
Connector Wedge	18	H-39487
Feeder Set	1	H-39559
Feeder	1	H-33931B
Feeder Screw	1	HFS1129
Tab	1	H-35671A

6

7

Description	Order	Part No.
Instruction Manual	1	4656
Prefeeder	1	947
Loctite® Blue	1	833
Loctite® Red	2	HFG739
5200 Adhesive Set	1	HFG725
5200 Marine Adhesive Sealant	1	HFG722
Injector	1	HFG200 HFG201
Hex Keys		
6 mm	1	HFG644
5 mm	1	HFG643
4 mm	1	HFG640
3 mm	1	HCP1089



8

Description	Order	Part No.
Lead Block Kit	1	7404
29 mm Outboard Lead Assembly	3	7403
57 mm Carbo Ratchet Assembly	1	7402
40 mm Carbo Assembly	1	7401
Horn Cleat	1	HCP168
Additional Lead Blocks		
40 mm Carbo Stand-Up Fixed	1	2652
2.25" Thru-Deck	1	047
Shackle (8 mm)	3	2117
Halyard Restrainer	1	944
Sheave/SS Inner Race Only	1	944ASSY
Clevis Pin (1/4" x .9")	1	HFG467
Bracket-Small	1	HCP393
Cotter Pin (1/16" x 1/2")	1	HFS118
Halyard Deflector	1	7303