

# HARKEN®

## INSTALLATION SHEET

### Big Boat Track Trim Caps • Control Blocks

Track: 560, 758, 759, 1846, 1847, 3154, 3155, 3156, 3159, 3162

Trim Caps: 631, 632, 3157, 3158

Control Blocks: 1893, 1936, 1982, 1983, 3000, 3001

1251 East Wisconsin Avenue • Pewaukee, WI 53072 U.S.A.

Telephone: (262) 691-3320 • Fax: (262) 691-3008

Web: [www.harken.com](http://www.harken.com) • Email: [harken@harken.com](mailto:harken@harken.com)

### INSTALLATION INSTRUCTIONS

**Read all instruction before cutting or mounting track.**

It may be necessary to put trim caps, control blocks and traveler car on the track before mounting. Slide control assemblies onto track with bumper facing the car. Keep control assembly loose so it can be moved out of the way while installing track.

#### Cutting Track

To cut track to length, make sure stop holes for control blocks do not interfere with hole for mounting track. If necessary, cut both ends of track (Figure 1).

#### Cockpit Installation

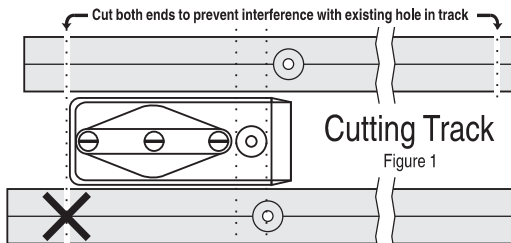
To determine correct track length, make sure track ends, without trim caps, are  $\frac{13}{16}$ " (21 mm) from edge of cockpit coaming. This prevents pivoting cam arms from hitting cockpit coaming and allows water to pass (Figure 2).

#### Installing Control Block/Traveler Car

Slide control block onto track with bumper facing car.

#### Cockpit Installation

Keep control block loose so it can be moved when installing track. Add the traveler car and the second control block with the bumper facing toward the traveler car.



#### Mounting Track

Through-bolt using  $\frac{5}{16}$ " (8 mm) fasteners.

Use flathead for low-beam, hexhead for high-beam.

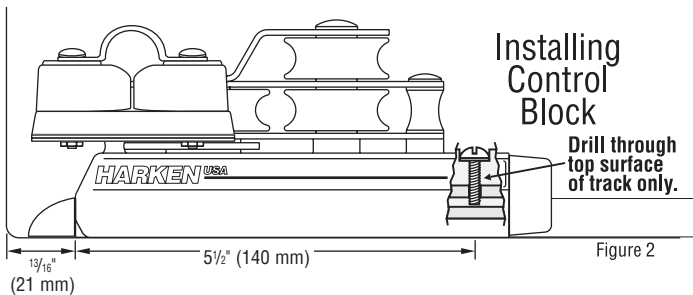


Figure 2

### Fastening Control Blocks

To install control blocks, use a  $\frac{3}{8}$ " (9.5 mm) diameter drill. Make a hole through **top surface** of track only at  $5\frac{1}{2}$ " (140 mm) from end of track (Figure 2). **1846 Track:** Drill only through top surface of track.

**Tip:** To mark hole, position control block flush with end of track. Drive mounting screw firmly against top surface of track, then loosen. Slide control block away. Start hole with centerpunch and drill hole through track top surface only. *Do not use screw hole in control block as drill guide.* Secure control block to track by tightening screw into hole. Use  $1\frac{1}{4}$ " (32 mm) screws for low-beam (758/1846/3154/3159) or 2" (50 mm) screws for high-beam (560/3156) track.

### Installing Trim Caps

Remove burrs on track edges. Press 631, 3157, 632, 3158 trim caps in place.

#### Maintenance

Harken equipment is designed for minimal maintenance, but some maintenance is required to give the best service and to comply with the Harken limited warranty. In general, the most important aspect of maintenance is to keep your equipment clean by frequent flushing with freshwater.

In corrosive atmospheres, stainless parts may show discoloration around holes, rivets and screws. This is not serious and may be removed with a fine abrasive. With the exception of winches, do not use grease unless specifically recommended in the instruction sheets.

Many Harken products are provided with specific instruction sheets that detail maintenance procedures. Instruction sheets are available at no charge by contacting Harken or a Harken distributor.

**Traveler Cars:** Keep traveler cars clean by frequently flushing with fresh water. Periodically clean cars by squirting a detergent/water solution into the car's center openings. Roll the car back and forth to distribute evenly and then flush bearings with fresh water. This maintenance is very important, particularly when the cars haven't been in use.

Do not use spray lubricants because ball bearings may skid instead of roll. If you use a light machine oil such as 3-in-1, use only a single drop in each ball race. Too much oil attracts dirt.

Clean track with detergent and water.

Frequently inspect shackles and control block fittings for signs of fatigue. Make sure every installation includes Harken track end stops. Arrange control tackle so cars do not hit end stops under load.

#### Warranty

See Harken catalog for full maintenance and warranty information.