

HARKEN®

INSTALLATION SHEET

Big Boat Track Trim Caps • Control Blocks

Track: 516, 560, 680, 758, 759, 1846, 1847
Trim Caps: 631, 632 • Control Blocks: 563, 564, 565, 566

N15W24983 Bluemound Road • Pewaukee, WI 53072 U.S.A.
Telephone: (262) 691-3320 • Fax: (262) 701-5780
Web: harken.com • Email: harken@harken.com

INSTALLATION INSTRUCTIONS

Read all instruction before cutting or mounting track.

It may be necessary to put trim caps, control blocks and traveler car on the track before mounting. Slide control assemblies onto track with bumper facing the car. Keep control assembly loose so it can be moved out of the way while installing track.

Cutting Track

To cut track to length, make sure stop holes for control blocks do not interfere with hole for mounting track. If necessary, cut both ends of track (Figure 1).

Cockpit Installation

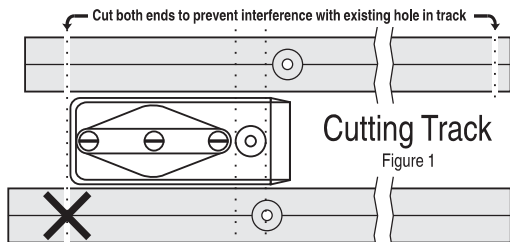
To determine correct track length, make sure track ends, without trim caps, are $13/16"$ (21 mm) from edge of cockpit coaming. This prevents pivoting cam arms from hitting cockpit coaming and allows water to pass (Figure 2).

Installing Control Block/Traveler Car

Slide control block onto track with bumper facing car.

Cockpit Installation

Keep control block loose so it can be moved when installing track. Add the traveler car and the second control block with the bumper facing toward the traveler car.



Mounting Track

Through-bolt using $5/16"$ (8 mm) fasteners.
Use flathead for low beam, hexhead for high-beam.

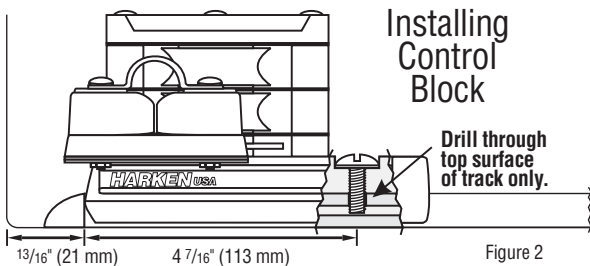


Figure 2

Fastening Control Blocks

To install control blocks, use a $\frac{3}{8}$ " (9.5 mm) diameter drill. Make a hole through **top surface** of track only at $4\frac{7}{16}$ " (113 mm) from end of track (Figure 2).

1846 Track: Drill only through top surface of track.

Tip: To mark hole, position control block flush with end of track. Drive screw firmly against top surface of track, then loosen. Slide control block away and drill hole. *Do not use screw hole in control block as drill guide.* Secure control block to track by tightening screw into hole. Use short screw for low beam, long screw for high-beam.

Installing Trim Caps

Remove any burrs on edges of track. Press 631 or 632 trim caps in place.

McLube™ is a registered trademark of McGee Industries, Inc.

Torlon® is a registered trademark of Solvay Advanced Polymers.

Inspect

Frequently inspect shackles and control block fittings for signs of fatigue and replace as necessary. Make sure every installation includes Harken track end stops. Arrange control tackle so cars do not hit end stops under load.

Maintenance

Traveler Cars: Clean by frequently flushing with fresh water. Periodically clean car by squirting a detergent/water solution into center openings. Roll car back and forth to distribute evenly then flush bearings with fresh water.

Do not use spray lubricants because ball bearings may skid not roll. Apply one to two drops of McLube® OneDrop™ to ball contact surfaces of track. Roll car back and forth through OneDrop™ several times to distribute onto bearings. Wipe remaining OneDrop™ off track. OneDrop™ is preferred but you can also use one to two drops of a light machine oil. Too much oil attracts dirt.

Track: Clean with detergent and water.

IMPORTANT! Exposure to some teak cleaners and other caustic solutions can result in discoloration of part and is not covered under the Harken warranty.

Warranty

For additional safety, maintenance and warranty information see www.harken.com/manuals or the Harken® catalog.